

Q3 trading update and acquisition of Empresa Brasileira de Bebidas e Alimentos SA – “ebba”

Making life's everyday moments more enjoyable

BRITVIC

Disclaimer

THIS PRESENTATION IS BEING PROVIDED TO YOU SOLELY FOR YOUR USE AT INVESTOR/ANALYST]MEETINGS TO BE HELD IN CONNECTION WITH THE POTENTIAL TRANSACTIONS DESCRIBED IN THIS PRESENTATION (WHICH INCLUDE A POTENTIAL OFFERING OF SECURITIES IN BRITVIC PLC (THE "COMPANY")) AND MAY NOT BE REPRODUCED OR PUBLISHED (IN WHOLE OR IN PART) OR FURTHER DISTRIBUTED TO ANY PERSON FOR ANY PURPOSE. INVESTORS SHOULD NOT SUBSCRIBE FOR ANY SECURITIES REFERRED TO IN THIS PRESENTATION EXCEPT ON THE BASIS OF INFORMATION TO BE PUBLICLY DISCLOSED BY THE COMPANY.

This document does not constitute or form part of any offer or invitation to sell or issue, or any solicitation of any offer to purchase or subscribe for, any shares in the Company, nor shall any part of it nor the fact of its distribution form part of or be relied on in connection with any contract or investment decision relating thereto, nor does it constitute a recommendation regarding the securities of the Company. This document is being supplied to you solely for the purposes of discussions with you to obtain your feedback. Nothing contained herein shall form the basis of any contract or commitment whatsoever.

This presentation has been prepared by the Company. Each of Nomura International plc and Citigroup Global Markets Limited (the "Banks") is acting for the Company and no one else and will not regard any person other than the Company as its client and will not be responsible to anyone other than the Company for giving advice in relation to this presentation. References in this notice to the "presentation" shall be deemed to include any other materials or information given or distributed to recipients by or on behalf of the Company in connection with this presentation, whether before, during or after this presentation and whether given or distributed orally, in writing or otherwise.

The Banks have not independently verified, and will not independently verify, the information contained herein or hereafter provided, and no representation or warranty, express or implied, is or will be made. No responsibility or liability is or will be accepted by the Banks, or to the extent permissible by law, the Company or any member of their respective group or directors, officers, employees, affiliates, agents or advisers as of them or their respective group to or in relation to the fairness, reasonableness, accuracy or completeness of the information contained herein or any other written or oral information made available to any recipient and any liability therefor is hereby expressly disclaimed. In particular, no representation or warranty is given as to the achievement or reasonableness of any future projections, management estimates, prospects or returns. Prospective investors are advised to seek their own financial and other professional advice in respect of the information, and must make their own independent assessment of the merits of any potential future transaction with the Company. Neither the Banks nor the Company are under an obligation to provide any recipient of this document with any additional information to either correct any inaccuracies or omissions or update the information provided (including, in particular, any information provided in draft form in this presentation).

The securities described herein have not been and will not be registered under the US Securities Act of 1933, as amended (the "Securities Act") or under the applicable securities laws of any state or jurisdiction of the United States, and any such securities may not be offered or sold in the United States except pursuant to an exemption from, or in a transaction not subject to, the registration requirements of the Securities Act or unless registered under the Securities Act. There will be no public offering in the United States.

Disclaimer

This presentation is only directed at the limited number of invitees who: (A) if in the European Economic Area (“EEA”), are persons who are “qualified investors” as defined under the Prospectus Directive (Directive 2003/71/EC and amendments thereto, including Directive 2010/73/EU, to the extent implemented in the relevant Member State of the European Economic Area) and any implementing measure in each relevant Member State of the EEA (the “Prospectus Directive”) (“Qualified Investors”) and (B) if in the UK, are Qualified Investors who have professional experience in matters relating to investments falling within Article 19(5) of the Financial Services and Markets Act 2000 (Financial Promotion) Order 2005 (as amended) (the “Order”) or are high net worth entities falling within Article 49(2)(a) to (d) of the Order (all such persons referred to in (A) and (B) together being referred to as “Relevant Persons”). If you are in the EEA or if you are in the UK then by receiving this presentation you represent and warrant to the Company and the Banks that you are a Relevant Person as set out above.

This presentation and any materials distributed in connection with this presentation are not directed or intended for distribution to or use by, any person or entity that is a citizen or resident located in any locality, state, country or other jurisdiction where such distribution, publication, availability or use would be contrary to the law or regulation of that jurisdiction or which would require any registration or licensing within such jurisdiction. Persons who come into possession of any document or other information referred to herein should inform themselves about and observe any such restrictions. Any failure to comply with these restrictions may constitute a violation of the securities laws of such jurisdictions.

This document includes statements that are, or may be deemed to be, “forward-looking statements”. These forward-looking statements are based on current expectations and projections about future events and can be identified by the use of a date in the future or forward-looking terminology, including, but not limited to, the terms “may”, “believes”, “estimates”, “plans”, “aims”, “targets”, “projects”, “anticipates”, “expects”, “intends”, “will”, “could” or “should” or, in each case, their negative or other variations or comparable terminology. These forward-looking statements include matters that are not historical facts and include statements regarding the Company’s intentions, beliefs or current expectations. They are not guarantees of future performance. By their nature, forward-looking statements involve risk and uncertainty because they relate to future events and circumstances. A number of factors could cause actual results and developments to differ materially from those expressed or implied by the forward-looking statements. Any forward-looking statements in this document reflect the Company’s view with respect to future events as at the date of this document and are subject to risks relating to future events and other risks, uncertainties and assumptions relating to the conditions to the acquisition being satisfied, the Company’s ability to integrate acquired businesses and personnel, the successful retention and motivation of key management, increased regulatory burden and the Company’s operations, results of operations, financial condition, growth, strategy, liquidity and the industry in which the Company operates. No assurances are given that the forward-looking statements in this document will be realised. Neither the Company nor the Banks undertake any obligation nor do they intend to revise or update any forward-looking statements in this document to reflect events or circumstances after the date of this document (except, in the case of the Company, to the extent required by the Financial Conduct Authority (the “FCA”), the London Stock Exchange or by applicable law, the Listing Rules or the DTRs). None of the future projections, expectations, estimates or prospects in this document should be taken as forecasts or promises nor should they be taken as implying any indication, assurance or guarantee that the assumptions on which such future projections, expectations, estimates or prospects have been prepared are correct or exhaustive or, in the case of the assumptions, fully stated in the document. As a result of these risks, uncertainties and assumptions, the recipient should not place undue reliance on these forward-looking statements as a prediction of actual results or otherwise.

Any indication in this document of the price at which ordinary shares have been bought or sold in the past cannot be relied upon as a guide to future performance. No statement in this document is intended to be a profit forecast and no statement in this document should be interpreted to mean that earnings per share of the Company for the current or future financial years would necessarily match or exceed the historical published earnings per share of the Company.

By accepting this document, the recipient is deemed to accept and agree to each of the above statements.

Each of Nomura International plc and Citigroup Global Markets Limited is authorised by the Prudential Regulation Authority and regulated by the FCA and the Prudential Regulation Authority.

3

Making life’s everyday moments more enjoyable

BRITVIC

Agenda

- Q3 trading update
- Acquisition of ebba



4

Making life's everyday moments more enjoyable

BRITVIC

Q3 trading update – solid revenue growth in continued challenging market conditions



- Solid group performance, despite continued challenging trading conditions
- Lapping strong group performance last year (Q3 revenue +5.3% reported)
- Take-home volume and value share gains in GB, France and Ireland⁽¹⁾

1. Market Data: GB take-home market data referred to in this announcement is supplied by Nielsen and runs to 6 June 2015. ROI take-home market data referred to in this announcement is supplied by Nielsen and runs to 17 May 2015. French market data is supplied by IRI and runs to 31 May 2015. All comparisons are on a constant currency basis. Q3 2014 revenue increase 4.1% on a comparable basis, reflecting change in reporting periods for Ireland. Market data: GB Nielsen to 4 July 2015, ROI Nielsen to 17 June 2015 and France IRI to 31 May 2015

5

Making life's everyday moments more enjoyable

BRITVIC



Acquisition of ebba

Making life's everyday moments more enjoyable

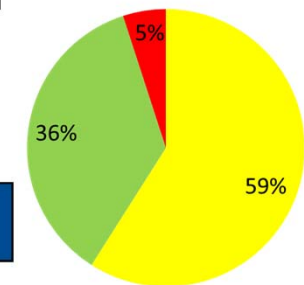
BRITVIČ

A unique opportunity to acquire a high quality business in Brazil

- # 1 supplier of liquid concentrates (dilutes) and # 2 RTD nectar drinks in Brazil⁽¹⁾
- Two leading brands – Maguary and dafruta
 - Maguary has 90% brand awareness⁽²⁾
- National presence
- Strong management team retained
- Enterprise value of R\$580m (£120.8m), acquisition effective cost of R\$545.4m (£113.6m); payable in two tranches
 - Intention to fund acquisition with a 4.97% non pre-emptive equity placing



ebba revenue 2014 by category



■ RTD's ■ Concentrates ■ Other

Brazil is the 6th largest soft drinks & the largest dilutes market globally ⁽³⁾

1 Analysis of ebba supplied Nielsen Data to March 2015

2 Copernicus & Officina Sophia prompted awareness – marketing study June 2012

3 Euromonitor International Passport 2014 to 2019 market report issued February 2015 (value)

4 R\$:£ 4.80

Making life's everyday moments more enjoyable

BRITVIC

Next step in executing our growth strategy



Leverage our portfolio in GB & Ireland

Innovate to meet changing consumer needs



Exploit global opportunities in kids, family and adult categories



Embed a winning culture

Improve operating margin



Build trust and respect in our communities

Exploit global opportunities in kids, family and adult categories

Britvic has leading brands and business capability



Proven marketing, category & technical expertise and a track record of successful innovation



Brazil offers a large and attractive market



ebba unlocks this opportunity



9

Making life's everyday moments more enjoyable

BRITVIC



Brazil represents an exciting growth opportunity

10

Making life's everyday moments more enjoyable

BRITVIC

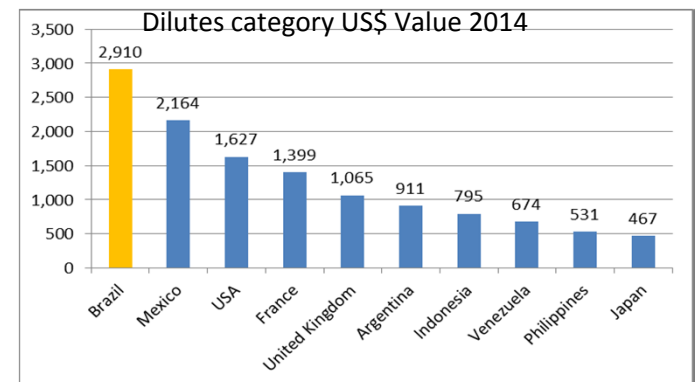
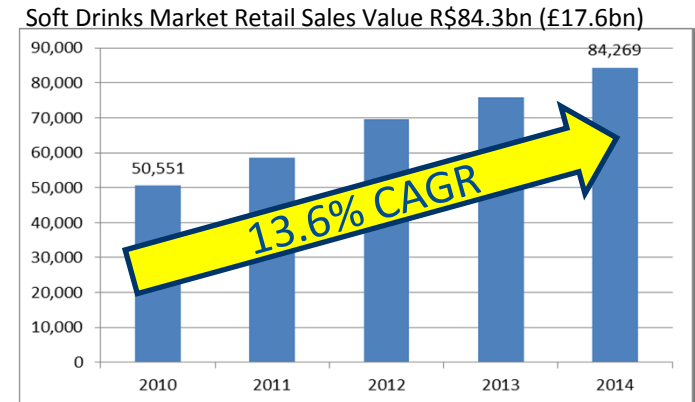
Immediate access to a large-scale growth market

- 6th largest soft drinks market globally (R\$84.3bn/£17.6bn)⁽¹⁾
 - Retail Sales Value growth CAGR of 13.6% over last 5 years
 - Volume growth CAGR of 4.0% over last 5 years
- Largest concentrates (dilutes) category globally⁽²⁾ (R\$6.6bn/£1.4bn)⁽¹⁾
- Fast growing juice drinks category (R\$10.2bn/£2.1bn)⁽¹⁾
 - Category volume growth 9.9% over last 5 years⁽¹⁾
- 200m+ population and forecast to reach 218m by 2025⁽³⁾
 - Younger and more affluent demographics

1 Euromonitor International Passport 2014 to 2019 market report issued February 2015. Juice drinks defined as juice, juice drinks and nectars. R\$:£ 4.80

2 Concentrates (Dilutes) is defined as a combination of liquid dilutes and powders

3 United Nations World population prospects report published 2013

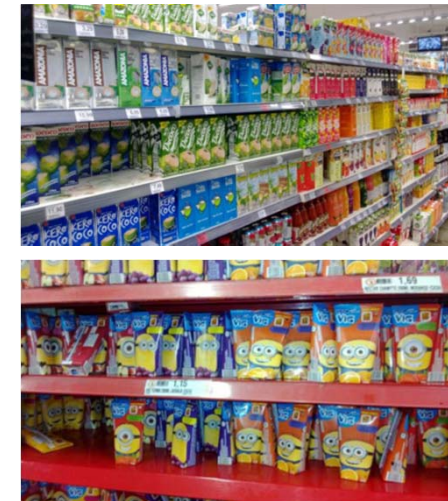
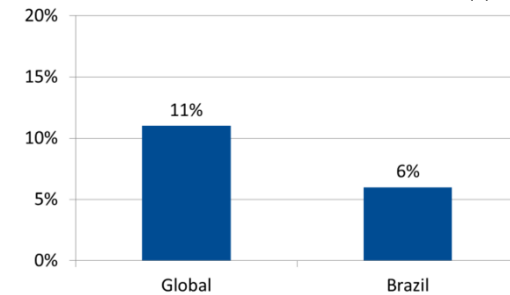


Kids, family & adults categories have untapped potential in Brazil

Britvic believes:

- Juice drinks category under-indexes in share⁽¹⁾
- Liquid dilutes category has lacked investment
- Kids category is commoditised and lacks brand leadership
- No discernible adults category
- Lack of engaging soft drinks fixture in-store

Juice drinks Volume % Total Soft Drinks (1)



1 Euromonitor International Research 2014

Short-term headwinds, but long-term growth prospects are strong

- Forecast GDP decline in 2015⁽¹⁾, falling consumer confidence index
 - GDP growth expected to recover from next year⁽¹⁾
- Looking forward (2014 to 2019) soft drinks are forecast to grow
 - Total soft drinks market volume forecast +3.1% CAGR⁽²⁾
 - Juice drinks volume forecast +9.1% CAGR⁽³⁾
- Positive consumer trends with increasing demand for:
 - Stills and “better for you” products
 - Differentiation and sophistication in brands, product and packaging innovation⁽²⁾



1 Focus report (the Brazilian Central Bank official publication for consensus forecast)

2 Euromonitor International Passport 2014 to 2019 market report issued February 2015.

3 Euromonitor International Passport 2014 to 2019 market report issued February 2015. Juice drinks defined as juice, juice drinks and nectars



Overview of ebba

Unique opportunity to acquire a high quality business



15

Making life's everyday moments more enjoyable

BRITVIC

Maguary – a household name with 90% brand awareness⁽¹⁾

- The number 1 liquid dilutes brand
 - The 11th largest soft drinks brand⁽²⁾
 - 31% market value share of liquid dilutes⁽²⁾
- Extended reach into RTD nectar drinks category
 - 10% market value share of RTD nectar drinks⁽²⁾
- Brand also available in the children's category
- Part of family life, dating back to the 1950's
- Available in PET, carton & can formats



1 Copernicus & Officina Sophia prompted awareness – marketing study June 2012

2 Analysis of ebba supplied Nielsen Data to March 15 (value)

dafruta – complements Maguary, enabling liquid dilutes category leadership

- Strong regional heartland
- Established in the 1980's as a mid-range price offering
- The number two liquid dilutes brand in the market⁽¹⁾
 - 20% market value share of liquid dilutes⁽¹⁾
- Also available as an RTD in nectar category
 - 4% market value share of RTD nectar drinks⁽¹⁾
- Brand extended into the children's category
- Available in PET, carton and can formats



¹ Analysis of ebba supplied Nielsen Data to March 15

17

Making life's everyday moments more enjoyable



BRITVIČ

Broad market presence and well-established infrastructure

- Brands have broad national presence with regional heartlands
- National distribution network and sales force presence
- Strong route to market and leading presence in major retailers
- Two production locations in the states of Ceara and Minas Gerais
- Strategic proximity to fruit growing regions
- Commercial and marketing head office in Sao Paulo with business support functions based in Recife and supply chain functions based in Araguari
- Over 1,100 employees



Strong management team retained to deliver the business case

			
João Caetano de Mello Neto <i>CEO</i>	4 years	24 years	<ul style="list-style-type: none"> ▶ Hired as Chief Executive Officer at ebba in 2011 ▶ Previously held senior management positions at consumer goods companies that include 14 years at The Muller Drinks Company (7 years as CEO)
Pedro Magalhães <i>CFO</i>	5 years	5 years	<ul style="list-style-type: none"> ▶ Joined ebba in 2009 as Chief of Staff and appointed as CFO in 2011 ▶ Previously a partner in private equity
Fabio Levalessi <i>Commercial Director</i>	3 years	12 years	<ul style="list-style-type: none"> ▶ Broad experience across food and beverage sector in Brazil ▶ More than 10 years experience with Ambev, J. Macêdo and Heineken
Gustavo Gonçalves <i>Industrial Operations Director</i>	1 year	5 years	<ul style="list-style-type: none"> ▶ Joined ebba in 2014 as Chief of Industrial Operations Director ▶ Chief of Industrial Operations of ITAMBÉ for 4 years

19

Making life's everyday moments more enjoyable

BRITVIC



Potential to create significant value

20

Making life's everyday moments more enjoyable

BRITVIC

Strong growth trajectory with short-term market headwinds

R\$M ⁽¹⁾	2012	2013	2014
Net Revenue	292.4	419.7	437.2
EBITDA	30.6	43.6	45.0
EBIT	23.8	33.7	32.7
EBIT Margin %	8.1%	8.0%	7.5%

2012 to 2014 growth driven by:

- Successful innovation launches and distribution gains
- With limited marketing investment

2015 outlook:

- Revenue expected to be 5% lower with EBITDA down 10%
- Reflecting challenging market conditions

Short-term risk on economy outweighed by value creation opportunity

2015 estimate is based on ebba management forecast adjusted for Britvic due diligence on the expected outcome for the year. All historical financial information is taken from ebba's audited statutory accounts. 2013 numbers agree to the restated comparatives in the 2014 statutory accounts following the reclassification of leases from operating to finance. ebba's audited statutory accounts were prepared under Brazilian GAAP, which is broadly consistent with IFRS. Following acquisition, ebba's financial reporting will be restated as required to ensure alignment with Britvic accounting policies, for example in 2014 some promotions estimated at R\$6m will be reclassified from overheads to revenue. The initial fair value/acquisition accounting will be determined provisionally on completion, and will be finalised within 12 months in line with IFRS.

21

Making life's everyday moments more enjoyable

BRITVIC

Potential to deliver significant shareholder value from leveraging previous International experience

- Ambition to at least double ebba EBITDA by 2020⁽¹⁾
 - Opportunity for significant margin expansion
- Short term focus will be on strengthening the business
 - Targeting sustainable cost savings of at least R\$10m
 - Re-invest cost savings to drive future growth
 - Marketing, innovation, A&P, people and infrastructure
- Ambition to maintain 2016 & 2017 EBITDA at broadly similar levels to 2015
- Ambition to drive strong EBITDA growth from 2018

1. Doubling from 2015 estimate which is based on ebba management forecast adjusted for Britvic due diligence on the expected outcome for the year

A clear framework to create value

- Focus on developing the kids, family and adult categories
- Re-invest cost savings in marketing, A&P, people and infrastructure
- Deploy Britvic best practice – marketing, category and revenue management expertise
- Extend brands into new sub-categories
- Introduce existing Britvic brands into the market
 - New to market concepts

Maximise “halo effect” of the market-leading brands



23

Making life's everyday moments more enjoyable

BRITVIC

Clear integration plan in place

- Will operate as a standalone business unit
- João Caetano to sit on Britvic Executive Committee
- Integration focused on key areas:
 - Marketing, innovation and category management
 - Supply chain
 - Delivery of cost savings
 - Legal, risk and financial governance
- Programme management office to oversee delivery
 - Proven capability in delivering strategic cost saving initiatives



24

Making life's everyday moments more enjoyable

BRITVIC

Transaction highlights

Financial Highlights

- Enterprise value of R\$580m (£120.8m)⁽¹⁾, acquisition effective cost of R\$545.4m (£113.6m)
- Effective acquisition cost multiple of 12.1x EV / EBITDA⁽¹⁾
- Expected to:
 - Be marginally EPS dilutive in years 1 & 2 after equity placing
 - Be EPS accretive from year 3
 - Exceed Britvic WACC from year 4

Timing & Conditions

- Expected to complete end September 2015, subject to fulfilment of closing conditions



Headline Enterprise value of R\$580m, which through the use of a forward contract to satisfy deferred consideration tranche, reduces to an effective Enterprise value of R\$545.4m at current R\$:£ exchange rate of 4.80 (equivalent to £113.6m). Enterprise value comprises two stage payments each of R\$193.8m, second payment two years from completion and repayment of ebba debt of R\$192.5m. 2014 EBITDA R\$45m equating to EV/EBITDA multiples of 12.9x based on headline enterprise value. The final split of the Enterprise Value between debt and equity will be subject to the level of debt and working capital acquired at the completion date

25

Making life's everyday moments more enjoyable

BRITVIC

Funding

- **Enterprise value of R\$580m (£120.8m), acquisition effective cost R\$545.4m (£113.6m)**
 - Consideration of R\$193.8m on signing and final payment of R\$193.8m on second anniversary of completion
 - Debt repayment of R\$192.5m⁽¹⁾
- **4.97% equity placing, to finance:**
 - Acquisition of ebba – initial consideration and ebba debt repayment (£80.5m)
 - Associated transaction costs of £7m, expected integration costs estimated at £5m
 - Working capital & investment in growing the business
- **Balance Sheet**
 - Maintains balance sheet strength and flexibility
 - Pro-forma leverage expected to be broadly neutral⁽²⁾

1. The final split of the Enterprise Value between debt and equity will be subject to the level of debt and working capital acquired at the completion date. R\$:£ exchange rate of 4.80.

2. The pro-forma debt leverage is the current sell side consensus for the financial year end 2015, adjusted for the anticipated proceeds from the 5% equity raise less the acquired net debt, initial consideration and associated transaction costs. 26



Proven capability in France

27

Making life's everyday moments more enjoyable

BRITVIC

In 2010 we acquired Fruité in France

- Strong category presence *but restricted to syrups and juice*
- Strong brand equity *but limited marketing spend available to drive further growth*
- National presence in France *with minimal sales outside of France*
- Committed management team *restrained by size of the organisation*
- A track record of innovation *within the boundaries of range extensions*



28

Making life's everyday moments more enjoyable

BRITVIC

Acquisition by Britvic in 2010 was the catalyst for growth

Accessing new category profit pools



Deploying revenue management principles



Bringing successful innovation to market



Marketing investment to build brand equity



29

Making life's everyday moments more enjoyable

BRITVIC

We have delivered a strong commercial & financial performance



Source: Britvic interim financial statements and IRI market data

30

Making life's everyday moments more enjoyable

BRITVIC

Summary

- Unique opportunity to acquire a business with leading brands in a scale growth market
- Leveraging our brand portfolio and capability to drive substantial growth
- Strong management team retained
- Ambition to at least double ebba EBITDA by 2020



Q&A

Participant dial-in numbers

- | Location you are dialling in from | Number you should dial |
|-----------------------------------|---|
| • United Kingdom | 020 3059 8125 |
| • All other locations | + 44 20 3059 8125 |
| • Participant Password | “Britvic” - must quoted to the Operator in order to gain access to the conference |

Making life's everyday moments more enjoyable

BRITVIC